



# Aizon Asset Health

## Harnesses the power of your data with ongoing measurements and metrics to reduce maintenance expenses while improving asset reliability

Critical asset failures are costly and, in an attempt to avoid such failures, pharma and biotech routinely face the challenge of keeping their assets in effective working order, while, at the same time, keeping expenses and production downtime to a minimum. However, continuing to conservatively follow a traditional, schedule-based approach to asset maintenance often further compounds what is already a challenging task. Meaning, a traditional approach to asset maintenance often achieves the opposite of what it set out to accomplish; that is, ineffective and inefficient repairs, increased expenses, an impact on time to market (TTM), and the compromise of Right First Time (RFT).

The traditional approach to asset equipment maintenance tends to be schedule-based; whereby inspection and component replacement is usually performed after equipment has been in operation for a specific period. A major downside of this approach is that it fails to verify equipment condition prior to preventative maintenance and, in an attempt to minimize equipment failure, tends to be overly conservative. Such an approach also means that, more often than not, equipment in an acceptable working condition is often needlessly replaced and, due to its intermittent nature, it can often lead to unexpected and potentially premature and serious asset equipment failure.

Both outcomes of a traditional, schedule-based maintenance approach often tend to lead to extended equipment or production line downtimes that can, in terms of TTM, RFT, safety and environmental concerns, maintenance costs, and the integrity of your assets, prove very expensive.

### Solution:

→ Aizon Asset Health

### Features:

- Monitors and evaluates the condition of your critical assets
- Identifies and alerts you to asset deterioration
- Guarantees optimal facility conditions

### Benefits:

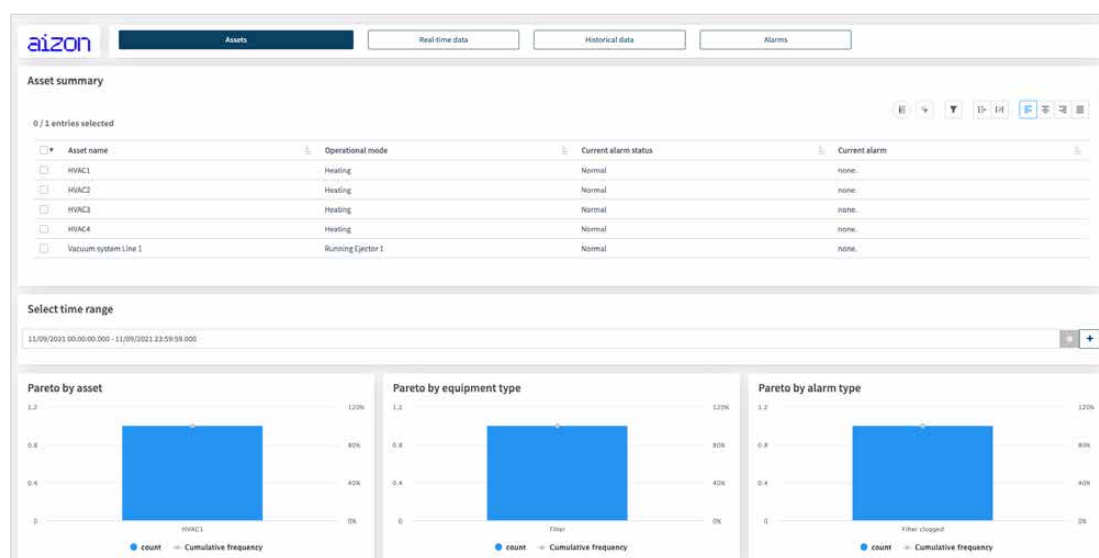
- Prevents critical asset failure that can lead to product rejection, impact time to market (TTM), and compromise Right First Time
- Provides proactive monitoring of asset health indicators, for example, temperature, vibration, and CO2 emissions
- Extensively applicable to unlimited equipment types, our Asset Health Application is seamlessly scalable and deployable across multiple assets, facilities, and locations

## The Asset Health Application

To help you and your team avoid such costly outcomes, Aizon offers you our intelligent, real-time, and proactive Asset Health Application monitoring system. Built on our GxP-compliant AI SaaS Platform for Life Sciences, and featuring a dashboard specifically customized to manage your unique asset maintenance needs, our Asset Health application allows you to leverage predictive power to monitor the health of your assets and, based on the prescriptive data-driven insights that the solution provides, receive advanced warnings on their conditions to allow you to react and intervene in real-time and keep your production lines up and running.

Further to minimizing production delays, enhancing TTM, achieving RFT, and reducing maintenance costs, the Asset Health Application ensures that optimal manufacturing facility environmental conditions like temperature, humidity, emissions, vibrations, and other plant operation indicators, remain constant and controlled; therefore, guaranteeing the efficient manufacture of quality pharmaceutical products.

## Key Asset Health Application Features



### The Asset Health Assets Screen

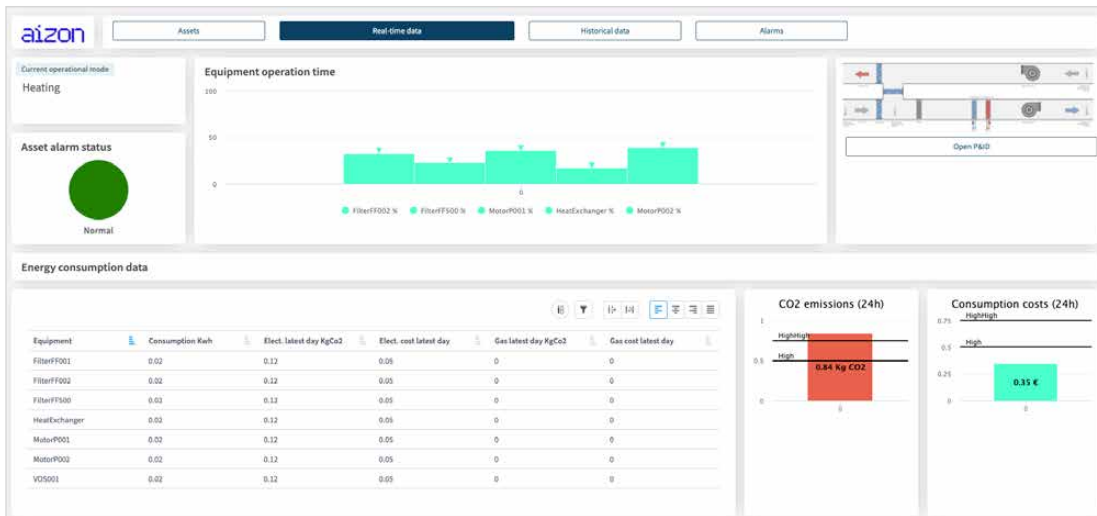
Scalable to numerous different asset types, deployable to multiple facilities and locations, and catering to a wide range of users involved in the biopharmaceutical manufacturing process, the Asset Health Application comprises several distinct features.

### Seamless Asset Selection

The application's Assets screen displays a list of your available assets along with important information like an asset's current operational mode and alarm status. From this screen, you can select an asset for in-depth real-time and historical monitoring as well as view, in detail, asset alarms triggered over a specific period.

### Real-time Asset Monitoring

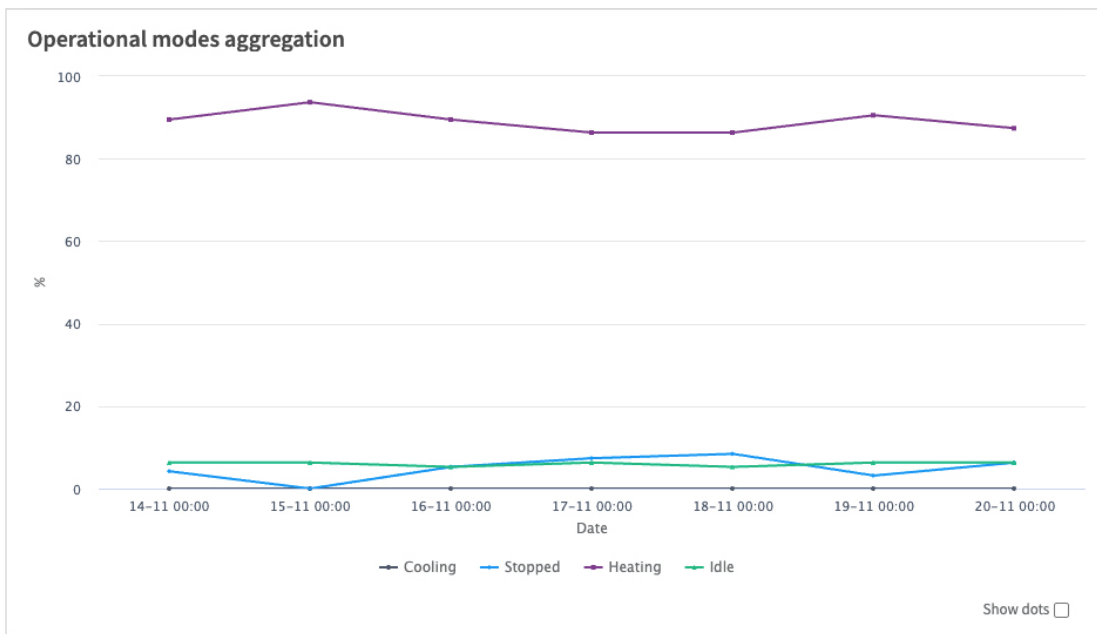
Analyze an asset's real-time data, including its current operational mode, the expected lifespan of asset equipment, the energy an asset has consumed, as well as its CO<sub>2</sub> emissions and energy consumption monetary costs. A plant process diagram allows you and your team to view the asset's real-time sensor data.



The Asset Health Application Real-time Data Screen

### Historical Data Monitoring

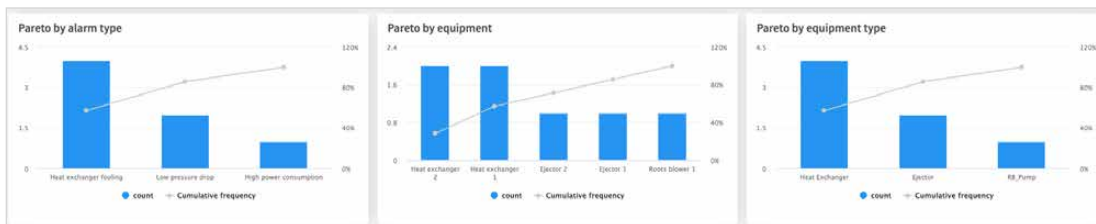
The application's Historical data screen allows you to analyze charts and visualizations that demonstrate the amount of time an asset has spent in a specific operational mode. Moreover, you can view asset energy consumption and compare current consumption against that of the previous month or year.



The Asset Health Application Historical Data Screen Asset Operational Modes Graph

### Alarms and Alerts

The application's alarms proactively alert you to issues that may cause asset equipment or component failure. On the application's Alarms screen, you can view information about alarms that triggered over a specific period and navigate elsewhere on the application to visually analyze charts and graphs that show you what asset data looked like when a specific alarm was triggered.



The Asset Health Application Alarms Screen Paretos

## Key Asset Health Application Benefits

### Ensures the Integrity of Your Assets

The Aizon Asset Health Application helps you ensure complete asset integrity by identifying and preventing unexpected equipment and component failure that usually results in production delays, compromised RFT and TTM, increased operating costs, unnecessary maintenance, and needless component replacement.

### Guarantees Optimal Facility Conditions

The Aizon Asset Health Application guarantees that optimal facility conditions, like temperature, humidity, contaminants, and other plant operation indicators, remain constant and controlled; thereby, ensuring the safe and efficient manufacture of quality pharmaceutical products.

### Scalable to Multiple Asset Types

The Aizon Asset Health Application's modular nature makes it scalable to multiple assets of different types, deployable to multiple facilities and locations, and caters to a wide range of users involved in the pharmaceutical manufacturing process

### Change Control Capabilities

The Aizon Asset Health Application provides change control to switch the maintenance procedure from frequency-based to data-driven asset health recommendations.

### Fully GxP Compliant

Aizon Asset Health allows you to maintain full GxP compliance via robust security features and data validation processes that are specifically and expertly designed to adhere to fluid pharmaceutical regulatory requirements. The application adheres to industry standards to provide GxP compliance you can trust:

- Quality: ISO 9001
- Information Security: ISO 27001
- Cloud Security: ISO 27017
- All data collection complies with ALCOA+ principles

### About Aizon:

Aizon is an AI SaaS software provider that transforms manufacturing operations with the use of advanced analytics, artificial intelligence, and other smart factory technologies focused on optimizing production within highly regulated industries. The Aizon platform seamlessly integrates unlimited sources of structured and unstructured data to deliver actionable insights across facilities. Aizon offers an intuitive way to gain meaningful operational intelligence by enabling real-time visibility and predictive insights in a GxP compliant manner with end-to-end data integrity.

## Awards

---



[Pharma Manufacturing  
Pharma Innovation Award](#)



[Frost & Sullivan 2020  
Enabling Technology  
Leadership Award](#)

## Industry Leading Initiatives

---



**Parenteral Drug Association**  
A Leading Global  
Facilitator for Pharma &  
Biopharma Industries



**Xavier University**  
AI in Operations Team



**International Society  
for Pharmaceutical  
Engineering**  
The Largest Pharma  
Engineering Association

## Certifications, Standards, and Regulations

---

