

# Predictive OEE

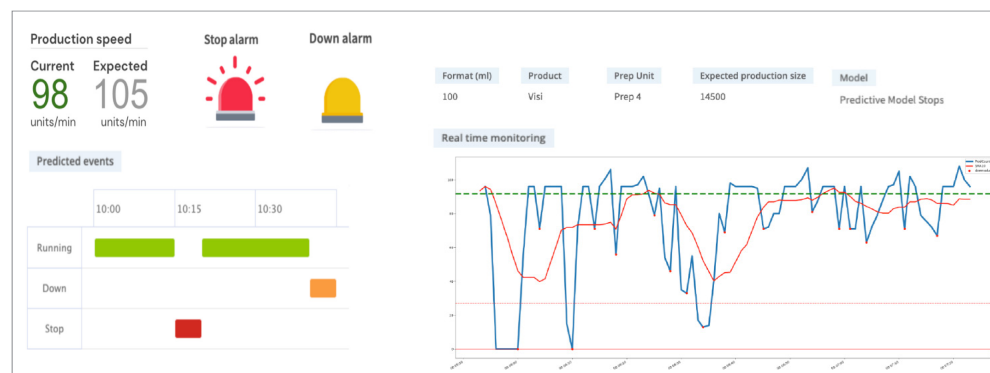
**Rising costs and decreasing margins mean that Life Sciences manufacturers need optimal performance of equipment and facilities,** often measured through Overall Equipment Effectiveness (OEE). While a simple metric, gaining lasting improvements in OEE requires a deep understanding of the real issues and root causes that reduce the availability of equipment, the current performance of the operations, and the impact on the quality of the final product. It's critical to identify those factors so organizations can take action before unplanned downtime, speed losses, or quality issues occur.

Aizon's Predictive OEE solution helps Life Sciences manufacturers improve equipment and asset performance by predicting most likely equipment and process issues and failures before they happen. Leveraging a range of equipment and production data sources, the solution is built on a real time data ingestion and contextualization platform designed to deploy and monitor AI models in a GxP compliant environment.

## Key Features and Benefits

### Real-time performance

monitoring plus predictive alerts provide operators with most likely equipment or process failure, with recommend actions to take



### Feedback loops

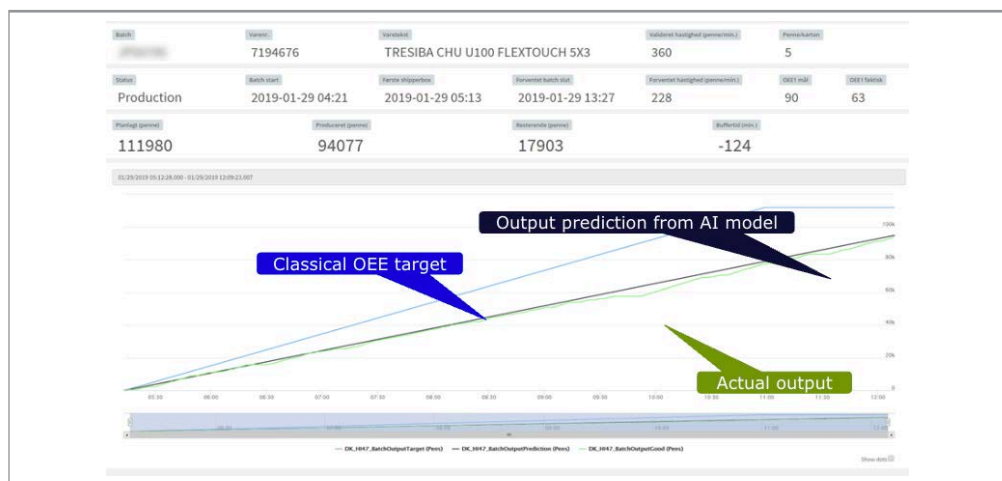
take operator input into consideration to improve the AI model and predictions over time

The interface includes a table of stop events and a form for registering a stop reason.

Date	Batch ID	Phase	Reason	Code	Comment	User	Reason date
23-06-20, 13:31:07	LS_600163_A	Stop on running	empty	Stop007	Material issue	empty	empty
23-06-20, 12:01:07	LS_305341_A	Stop on running	empty	Stop003	Others	empty	empty
23-06-20, 04:53:06	LS_500300_C	Stop on running	empty	Stop004	Maintenance	empty	empty
23-06-20, 04:45:06	LS_600363_C	Stop on running	empty	Unexpected	Material issue	empty	empty
23-06-20, 04:34:04	LS_600363_C	Stop on running	empty	Stop001	Format adjust...	empty	empty
23-06-20, 23:38:07	LS_502105_A	Stop on running	empty	Stop005	Format adjust...	empty	empty
23-06-20, 21:20:07	LS_523000_A	Stop on running	empty	Stop004	Format stop	empty	empty
23-06-20, 16:07:07	LS_253391_C	Stop on running	empty	Stop001	Format adjust...	empty	empty
23-06-20, 15:08:07	LS_253391_C	Stop on running	empty	Stop003	Material issue	empty	empty
23-06-20, 13:57:07	LS_500396_C	Stop on running	empty	Unexpected	Material issue	empty	empty

Buttons: Enter Stop Reason, Back, Apply, OK

**Engineers and operators** receive actionable recommendations from the AI model in real time – across multiple unit operations or entire production lines



**When AI models are applied to real-time facility data with Aizon Predictive OEE**, manufacturers experience decreased equipment downtime, maintenance costs, investigation time, and maintenance deviations. Aizon Predictive OEE optimizes maintenance and engineering performance and resources, ultimately giving manufacturers the insights needed to improve asset and facility performance.

## Aizon's Platform

Aizon's solutions enable life sciences manufacturers to improve decision making and outcomes by aggregating data and deploying compliant AI across the manufacturing ecosystem.

## GxP Compliance

The platform allows you to maintain full GxP compliance via robust security features and data validation processes that are specifically designed to adhere to dynamic pharmaceutical regulatory requirements. Aizon complies with industry standards to provide GxP compliance you can trust:

- Quality: ISO 9001
- Information Security: ISO 27001
- Cloud Security: ISO 27017
- All data collection performed in accordance with ALCOA+ principles